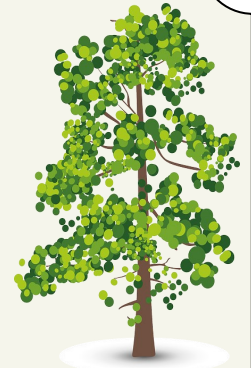




Timber Lake Homeowners Association



www.hoatimberlake.com



TIMBER LAKE HOA BOARD

- President : Gerald Bell
- Vice-President: Vacant
- 1st Vice-President: Barbara Tango
- Treasurer: Pat Kelly
- Secretary: Donna Eichhoefer

IMPORTANT NUMBERS



Animal Control	660-5400
Building Permits	488-9300
Digging Permits	811
Mosquito Control	606-2200
Sheriff's Department	922-3300
Street Lights	891-4968
Waste Pro	606-1899

CRIME WATCH AND HOLIDAY SAFETY

During the holiday season we need to remain aware and not become a victim of a crime of opportunity. Lock your car doors at all times, do not leave shopping bags, purses or small electronics where they can be seen from outside the car, use your trunk. As the days get shorter close your curtains or blinds before darkness allows an easy view of your lighted interior.



Here are a few links to some more detailed information; Leon County Sheriff's Crime Watch Magazine

<http://>

www.leoncountysoc.com/news-events/publications

The National Safety Counsel

<http://www.nsc.org/NSCDocuments/Holiday-Safety-Tips.pdf>

ASPCA for our furry children

<https://www.aspc.org/pet-care/holiday-safety-tips>

Keep your doors locked and report any suspicious activity to the Sheriff's Office immediately.

A FRIENDLY REMINDER FROM THE ACC



Please remember that trash cans are not to be left at the curb after pick up

day and that parking on the street is not permitted.

The picnic tables at the Commons have been damaged from being moved. They are to re-

main under the Pavilion at all times and trash is to be picked up when you leave.

Open house and garage sale signs are now permitted for the day of the event only. Do not place any signs on private property without prior permission.



Call Waste Pro at 606-1899 to arrange pick up for large items such as furniture, appliances and large amounts of yard waste. These items **REQUIRE** special arrangements for pick up by the account holder.



TIMBER LAKE HOMEOWNERS ASSOCIATION

Treasurer's Report - August 2015

CHECKING BALANCE BROUGHT FORWARD		\$7,820.85
MONTHLY ASSOCIATION OPERATIONS		
REVENUE		
	-0-	
	-	
Sub Total		0-
EXPENSES		
8/2 Utilities - Fountain - July	(\$70.51)	
8/3 Utilities July	(700.27)	
8/3 Internet Services August	(10.00)	
8/3 Annual Audit - 2014/2015	(600.00)	
8/3 Mow Commons - 7/9 & 7.23	(486.00)	
8/24 Cut Down Dead Tree in Commons	(650.00)	
Sub Total		(\$2,516.78)
ENDING CHECKING BALANCE AS OF 8/31/15		\$5,304.07
BALANCE IN ROAD FUND ACCOUNT AS OF 8/31/15		\$23,143.50

Respectfully submitted by Pat Kelly, Treasurer

**Timberlake Homeowners Association
Statement of Cash Receipts and Disbursements
June 1, 2014 - May 31, 2015**

Category Description	2013-2014		2014-2015	
	Operating Acct.	Operating Acct.	Operating Acct.	Road Fund
Cash Receipts:				
Homeowners Dues	\$33,112.50	\$30,049.25		
Wharf Fee (Teen Challenge)	500.00	500.00		
Miscellaneous - Stop Sign Reimb.			103.13	
Transfer from Operating Account	-0-	-0-		\$10,000.00
Total Cash Receipts	\$33,612.50	\$30,652.38		\$10,000.00
Cash Disbursements:				
Utilities	\$6,945.25	\$9,226.79		
Mowing/Maintenance	5,389.00	5,592.00		
Dues/Fees/Taxes	167.75	155.75		
Insurance	4,826.70	4,766.61		
Postage/Supplies/Copies/Misc.	481.74	418.61		
Roads	574.00	3,194.23		
Repairs and Renovations	231.66	1,131.69		
Audit	500.00	500.00		
Transfers - To Road Fund	10,000.00	10,000.00		
Total Cash Disbursements	\$29,166.10	\$34,985.68		-0-
Excess of Cash Receipts Over Disbursements	\$4,496.40	(\$4,333.30)		\$10,000.00

C O M M O N A R E A

The Pavilion is available to all residents and guests to use.



You can reserve use of the Pavilion for parties or events by sending an e-mail to donnaattimberlake@gmail.com or by contacting any Board member.

Our fence has been getting some rough use lately, Please remem-

ber that we have a rustic style fence that is not designed for people to sit on or children to climb on.



Please clear your trash and other debris from the picnic area. You are responsible for your own trash.



We love our pets but please keep dogs on leashes and pick up any business they leave about.



Parking on the street is not permitted. Please make sure your family and guests keep their cars pulled all the way off the street.